

# FLATWORK DRYER IRONERS

INTERACTIVE  
CATALOGUE



# WHEN PERFECT IRONING IS A MUST

Danube International supplies a full range of cylinder heated long lasting flatwork dryer ironers. Simple or equipped with sophisticated devices, these machines are designed for high performance and energy savings.

Danube range of flatwork ironers are built to meet the needs of hotels, healthcare facilities, nursing homes and on premises laundries. Designed to improve the production efficiency of our customers and to reduce operating costs, they are recognized among the dryer ironers to be functional and safely easy to use. Innovative and compact, they save space and offer various options which make them adaptable to most of the requirements.

4 ranges are available:

- ø 200 and 325 mm roll with new working widths and new BM control to be more productive, more efficient and suitable for most needs.
- ø 500 and 650 mm with ET2 control, fully programmable, allowing significative energy and time savings thanks to numerous standard features or options.



# RANGE OF MODELS

## FLATWORK IRONERS - Ø 200 mm BM

CONTROL TYPE	HEATING	WORKING WIDTH		
		1,40 m	1,60 m	2 m
BM control	Electric	MICRA-14 BM	MICRA-16 BM	MICRA-20 BM

NEW

## FLATWORK IRONERS - Ø 325 mm BM

CONTROL TYPE	HEATING	WORKING WIDTH		
		1,40 m	1,60 m	2 m
BM control	Electric or gas (G)	D-14 BM	D-16 BM	D-20 BM

NEW

## FLATWORK IRONERS Ø 325 MM - GOLD

CONTROL TYPE	HEATING	WORKING WIDTH		
		2 m	2,60 m	3,30 m
BM control	Electric or gas (GR)	D-20 GOLD	D-26 GOLD	D-33 GOLD

NEW

## FLATWORK IRONERS - Ø 500 mm ET2 GOLD

CONTROL TYPE	HEATING	WORKING WIDTH		
		2 m	2,60 m	3,3 m
ET2 control	Electric, gas (G - GR) or steam	M-20 ET2	M-26 ET2	M-33 ET2

## FLATWORK IRONERS - Ø 650 mm ET2 GOLD

CONTROL TYPE	HEATING	WORKING WIDTH		
		2 m	2,60 m	3,3 m
ET2 control	Electric, gas (GR) or steam	G-20 ET2	G-26 ET2	G-33 ET2

HEATING CODES: E = ELECTRIC, G = GAS, GR = RADIANT GAS, S = STEAM

## DRYING IRONING

---

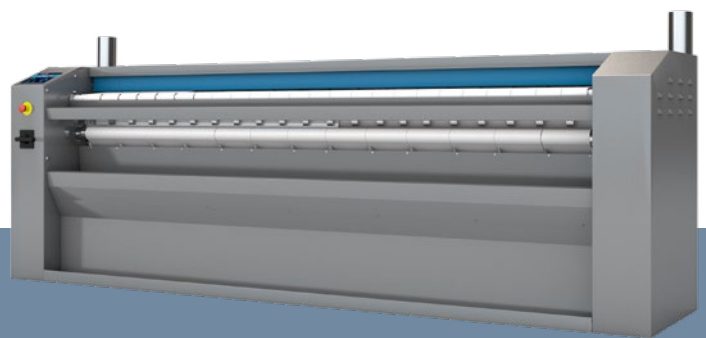
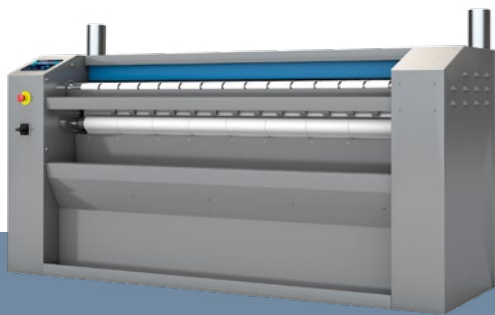


### Ø 200 mm

**MICRA RANGE : MICRA-BM**

- ✓ Dries and irons flat linen directly from a high spin washer extractor in a single operation.
- ✓ Front feeding and return.
- ✓ Electric heating.
- ✓ Sizes: 1,40 m / 1,60 m / 2 m.
- ✓ New BM control: selection of speed and temperature. AUTO mode: automatic adjustment of the ironing speed according to the temperature selected.
- ✓ Ironing speed: 1,5 to 6 m/min.
- ✓ Motor with speed inverter.
- ✓ Ironing by NOMEX belts.
- ✓ Skinplate and stainless-steel panels.

## DRYING IRONING



### Ø 325 mm

#### DELTA RANGE: D-BM

- ✓ Dries and irons flat linen directly from a high spin washer extractor in a single operation.
- ✓ Front feeding and return.
- ✓ Electric or gas heating (atmospheric burners).
- ✓ Sizes: 1,40 m / 1,60 m / 2 m.
- ✓ New BM control: selection of speed and temperature. AUTO mode: automatic adjustment of the ironing speed according to the temperature selected.
- ✓ Ironing speed: 1,5 to 10 m/min.
- ✓ Motor with speed inverter.
- ✓ Ironing by NOMEX belts.
- ✓ Skinplate and stainless-steel panels.

#### OPTIONS:

CARE IRON : humidity control with automatic ironing speed regulation  
Nickel plate cylinder.

### Ø 325 mm GOLD

#### DELTA RANGE: D-GOLD (EFFICIENT RANGE)

- ✓ Dries and irons flat linen directly from a high spin washer extractor in a single operation.
- ✓ Front feeding and return.
- ✓ Electric or gas heating (Radiant burners).
- ✓ Sizes: 2 m / 2,60 m / 3,30 m.
- ✓ New BM control: selection of speed and temperature. AUTO mode: automatic adjustment of the ironing speed according to the temperature selected.
- ✓ Ironing speed: 1,5 to 12 m/min.
- ✓ Motor with speed inverter.
- ✓ Ironing by NOMEX belts.
- ✓ Skinplate and stainless-steel panels.

#### OPTIONS:

CARE IRON : humidity control with automatic ironing speed regulation  
Nickel plate cylinder.

# Ø 200 / Ø 325 mm



## NEW BM CONTROL

- 3 selectable operating modes:
  1. MANUAL MODE: Selection of speed and temperature.
  2. AUTO MODE: automatic adjustment of the ironing speed according to the temperature selected.
  3. CARE IRON humidity mode (option for Ø 325 mm): automatic adjustment of ironing speed according to the humidity detected in the laundry.



## ROBUSTNESS

- Roll driving by inverter: smooth operation preventing the wear of belts and mechanical elements.
- Skinplate and stainless steel panels: long lasting.
- NOMEX quality ironing belts: high temperature resistant.
- Optional nickel plate roll: anticorrosive, more durable (Ø 325 mm only, not available on Ø 200 mm).



## EFFICIENCY

- CARE IRON: automatic regulation of ironing speed according to residual moisture, energy economizer (Option on Ø 325 mm).
- Good heat conduction thanks to the roll material and its thickness : greater control of energy expenditure.
- Fume circulation circuit from the bottom reducing energy consumption.
- Automatic shutdown at 80°C: increases life time of ironing belts. Adjustable with BM control.
- Accurate temperature control and lower energy consumption.
- Gas model with radiant burners: better hourly output by 25 %, time and energy savings.



## VERSATILITY

GOLD ranges:

- Gas radiant burner model : flexibility for a better production (25 % increase) or adaptation to high level places.



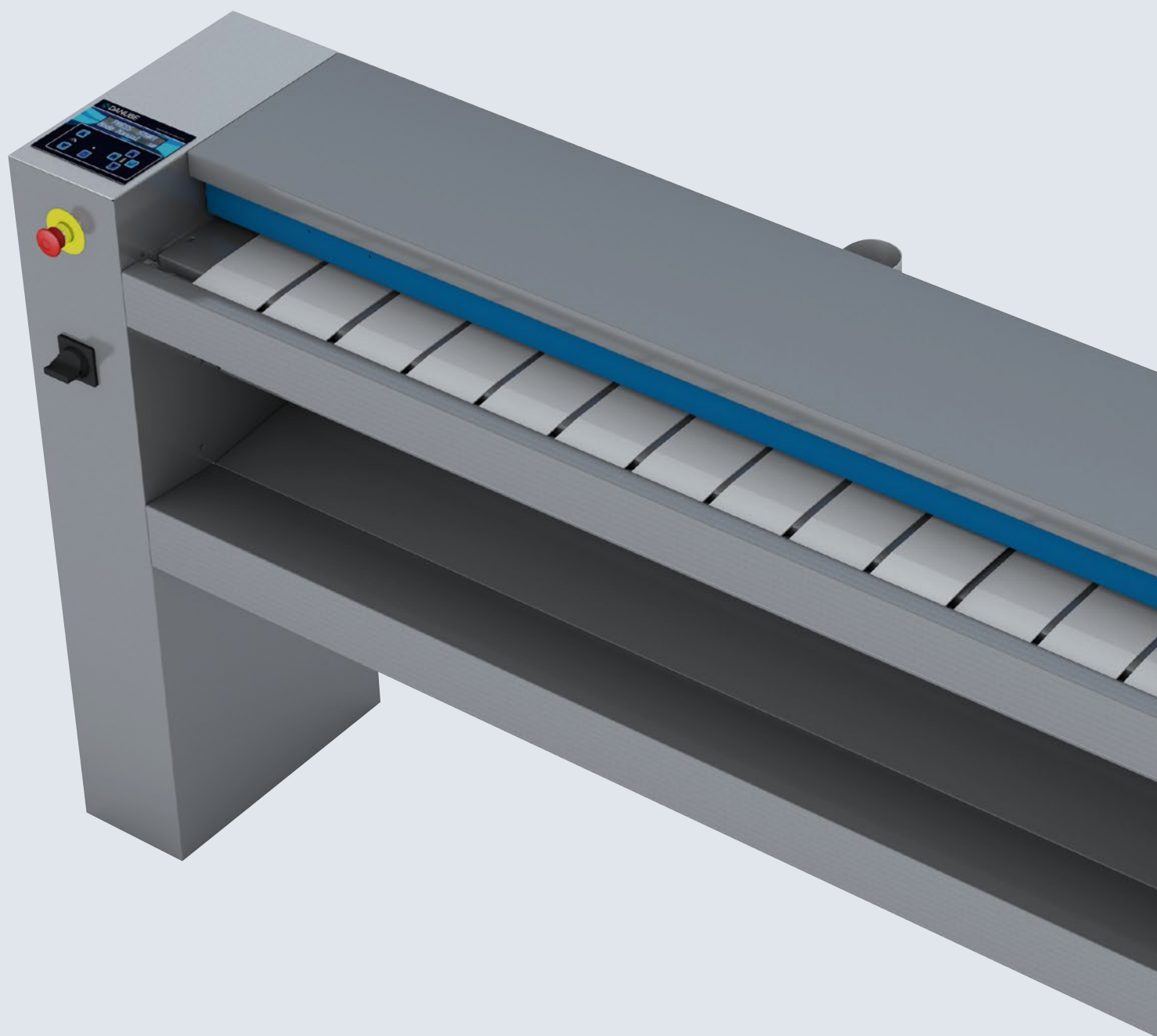
## EASY MAINTENANCE

- Easy access to all components on both sides of the machine.
- Compact dimensions: save place.



## ERGONOMICS

- Acoustic comfort: 65 dba max.
- Skinplate and stainless steel panels: easy to clean, better hygiene (RABC compliance).
- Minimal encumbrance: space saving.
- New BM control: user-friendly and easy to read.
- Appropriate working height: 990 mm feeding bands.





# **BM CONTROL**

**Display of temperature and speed: easy to read**

**Adjustable temperature and ironing speed**

With manual mode: better ironing management, accurate and adaptable.

**Auto mode**

Automatically maintains the selected ironing temperature without intervention, heating performance, better output, energy savings.

**Care Iron**

Option (available on Ø 325 mm): possibility to select this mode to automatically adapt the ironing speed according to the residual moisture of the laundry.

# **EFFICIENCY**

The new Gold ranges come with several energy and time saving features

**Care Iron**

Automatic regulation of ironing speed according to residual moisture, energy economizer (option on Ø 325 mm).

**Accurate temperature control**

Thanks to new BM control with temperature selection.

**Automatic shutdown at 80 °C**

Increases the life time of ironing belts.

**Good heat conduction**

Thanks to the material of the roll and its thickness: greater control of the energy expenditure.

**Radiant gas burner heated model**

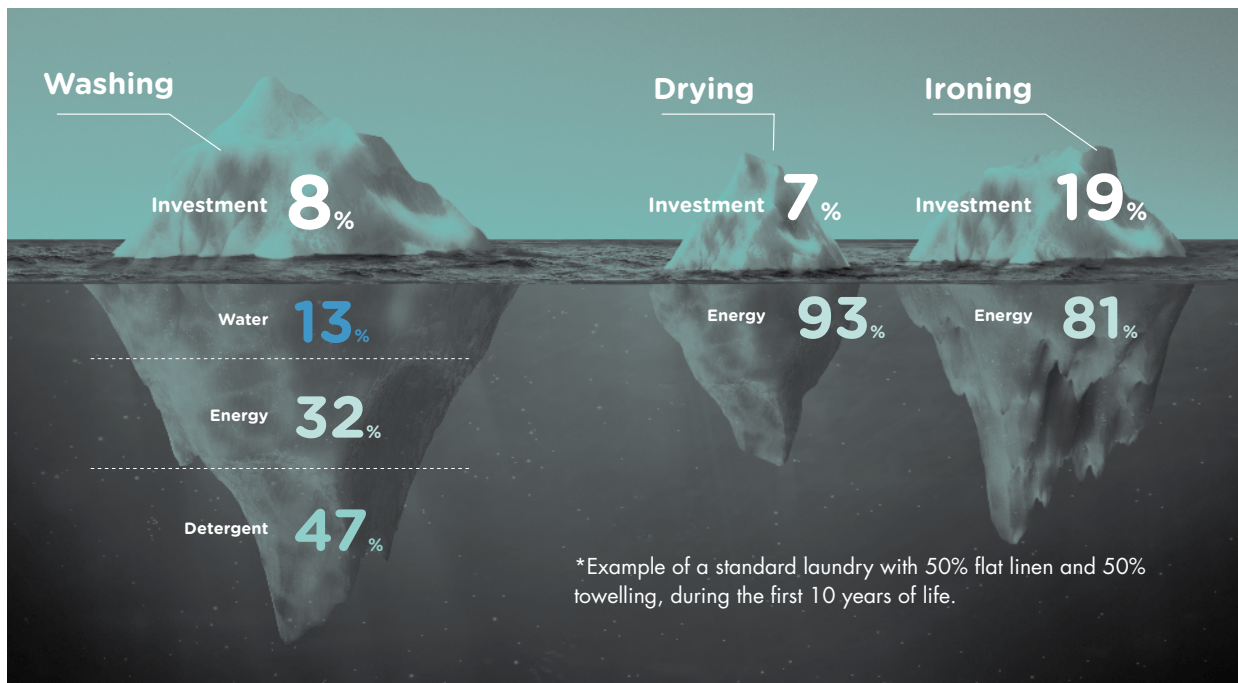
hourly output is increased by 25 %: time and energy savings.

In a laundry, machinery is the tip of an iceberg.

Danube pays a specific attention to the invisible part, to optimize resources throughout the life cycle of machines.

WATCH VIDEO

100 %  
of resources



\*Example of a standard laundry with 50% flat linen and 50% towelling, during the first 10 years of life.





## ROBUSTNESS

Our flatwork ironers have been designed to last and preserve main components as much as possible



### Nomex quality ironing belts

High temperature resistant.

### Roll driving by inverter

Smooth operation preventing the wear of belts and mechanical elements.

### Skinplate and stainless steel panels

Long lasting and easy to clean.

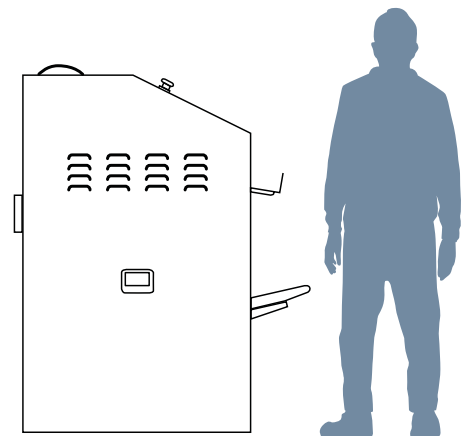
### Nickel plate roll (opt.)

Anti-corrosive, more durable (option ø 325 mm).



## ERGONOMICS

As health and safety at work had become an important issue, our equipment is designed to be the most comfortable for users



### Acoustic comfort

65 dba max.

### Minimal encumbrance

Save space, fits in most of areas.

### Skinplate and stainless steel panels

Easy to clean, better hygiene: RABC compliance.

### User friendly control

**New BM** electronic control.  
Selection of an adaptable speed and temperature.  
Auto mode enabling an automatic ironing operation.

### Motor with inverter

Providing a gradual acceleration, soft use.

### Appropriate operating height

990 mm at feeding bands.



# EASY MAINTENANCE

One of DANUBE concerns is to make life easier for our clients. That includes offering quality equipment and parts of reputed brands, which demand little maintenance.

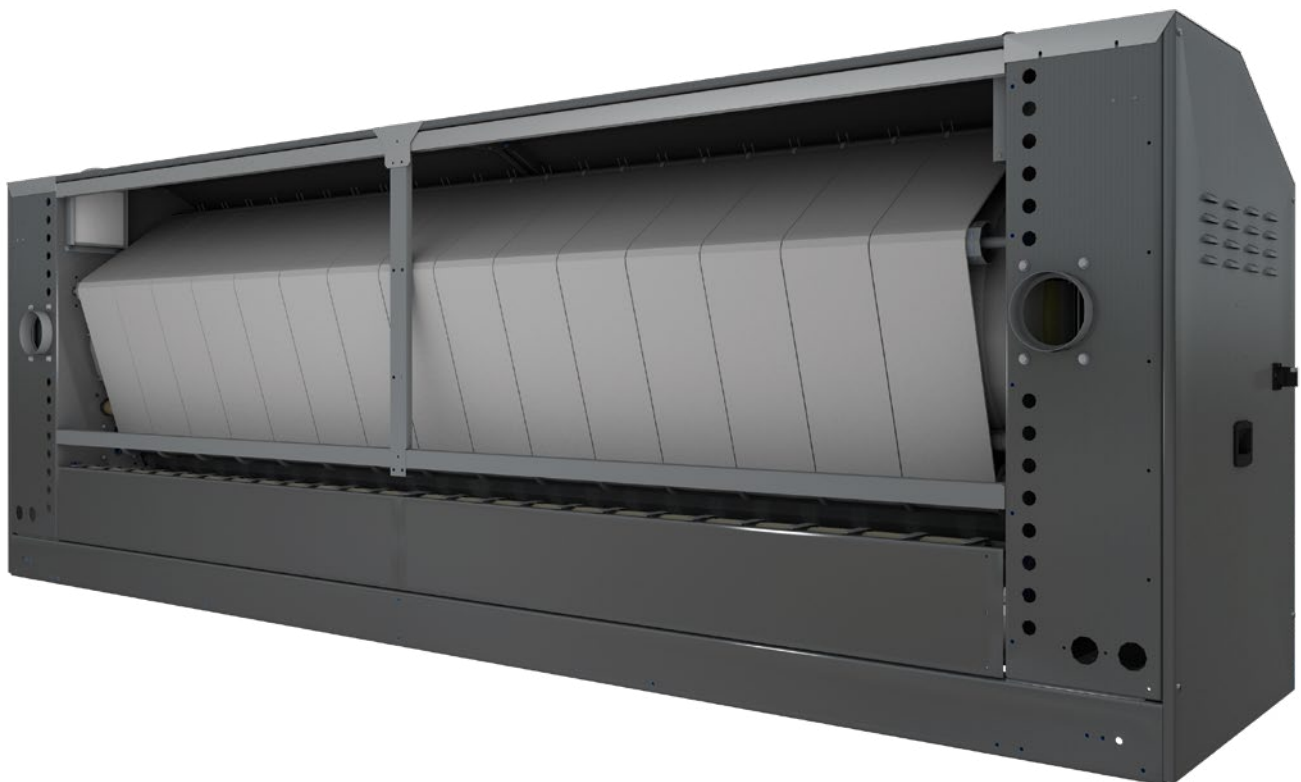
## **One electrical connection and exhaust required**

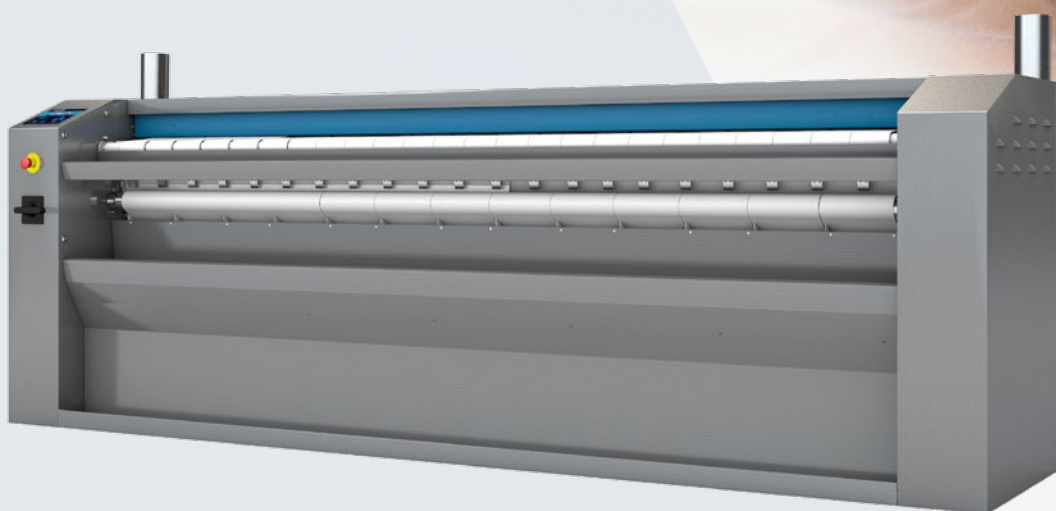
## **Easy access to all components**

On both sides of the machine.

## **Minimal encumbrance**

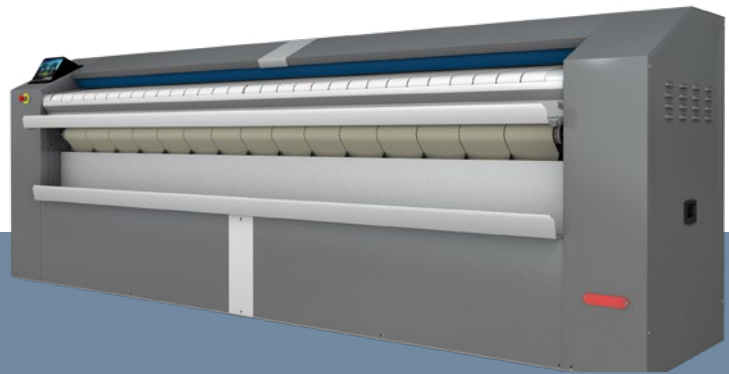
Fits most spaces.





## DRYING IRONING FOLDING (OPT)

---



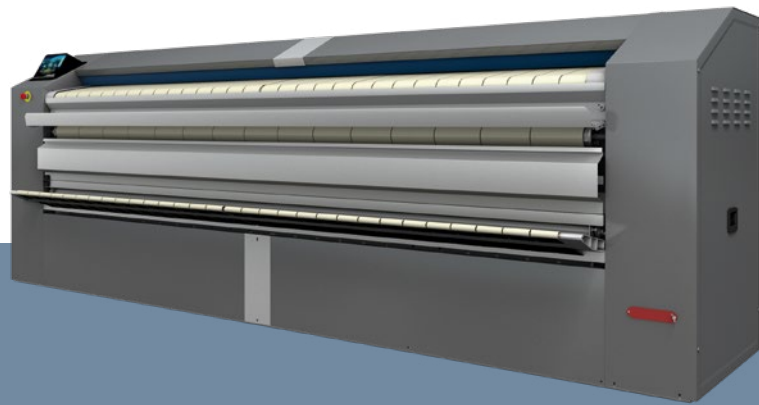
### Ø 500 MM GOLD

#### MAXIMA RANGE: M-ET2 (EFFICIENT RANGE)

- ✓ Dries and irons flat linen directly from a high spin washer extractor in a single operation.
- ✓ Front feeding and return.
- ✓ Electric, gas or steam heating. Radiant gas burner model available.
- ✓ Sizes: 2 m / 2,60 m / 3,30 m.
- ✓ ET2 microprocessor control with 7" coloured touch screen, fully programmable, 5 preset programs.
- ✓ Ironing speed: 0,5 to 8 m/min.
- ✓ Reversing roll as standard.
- ✓ Motor with speed inverter.
- ✓ Ironing by Nomex belts.
- ✓ Built-in cool down system.
- ✓ Skinplate and stainless steel panels.
- ✓ **OPTIONS:**
  - CARE IRON Humidity control with automatic ironing speed regulation.
  - Nickel plate cylinder.
  - HPS: high productivity system with ironing speed until 15 m/mn and reduced speed for feeding help.
  - Built-in lengthwise folder with or without rear exit.

## DRYING IRONING FOLDING (OPT)

---



### Ø 650 MM GOLD

#### GIGA RANGE: G-ET2 (EFFICIENT RANGE)

- ✓ Dries and irons flat linen directly from a high spin washer extractor in a single operation.
- ✓ Front feeding and return.
- ✓ Electric, radiant gas or steam heating.
- ✓ Sizes: 2 m / 2,60 m / 3,30 m.
- ✓ ET2 microprocessor control with 7" coloured touch screen, fully programmable, 5 preset programs.
- ✓ Ironing speed: 0,5 to 15 m/min.
- ✓ Reversing roll as standard.
- ✓ Motor with speed inverter.
- ✓ Ironing by Nomex belts.
- ✓ Built-in cool down system.
- ✓ Skinplate and stainless steel panels.
- ✓ CARE IRON Humidity control with automatic ironing speed regulation as standard.
- ✓ HPS: high productivity system with ironing speed until 15 m/mn and reduced speed for feeding help as standard.
- ✓ **OPTIONS:**
  - Nickel plate cylinder.
  - Built-in lengthwise folder with or without rear exit.

# Ø 500 / Ø 650 mm



## EASY TOUCH 2

- Fully programmable ET2 control with 7" touch screen
- 5 preset programs.
- 37 available languages.
- USB connection: free software online for programming, telemetry, data analyses...
- Danube Online - Connectivity ready.
- Reversing roll as standard.



## ROBUSTNESS

- Roll driving by inverter: smooth operation preventing the wear of belts and mechanical elements.
- Skinplate and stainless steel panels: long lasting.
- NOMEX quality ironing belts: high temperature resistant.
- Optional: nickel plate roll anticorrosive, more durable.



## EFFICIENCY

- CARE IRON : automatic regulation of ironing speed according to residual moisture, energy economizer (standard on Ø 650 mm, optional on Ø 500 mm).
- Good heat conduction thanks to the roll material and its thickness : greater control of energy expenditure.
- Fume circulation circuit from the bottom reducing energy consumption.
- Automatic shutdown at 80°C : increases life time of ironing belts.
- Accurate temperature control and lower energy consumption.
- Gas model with radiant burners: better hourly output by 25 %, time and energy savings.
- HPS : high production system with automatic adjustment of ironing speed , lowered for feeding and increased up to 1.5 m/min for an optimized production (standard on Ø 650 mm, optional on Ø 500 mm).



## VERSATILITY

- Radiant gas burner model : flexibility for a better production (25 % increase) or adaptation to high level places.
- Built-in lengthwise folder.
- Rear exit (only available with lengthwise folder)
- Possibility of adding an independant crossfolder and stacker.



## EASY MAINTENANCE

- Easy access to all components on both sides of the machine.
- Compact dimensions: save place, same dimensions with built-in folder for easier installation.
- No specific installation required : electricity and exhaust
- Remote communication: quick intervention.



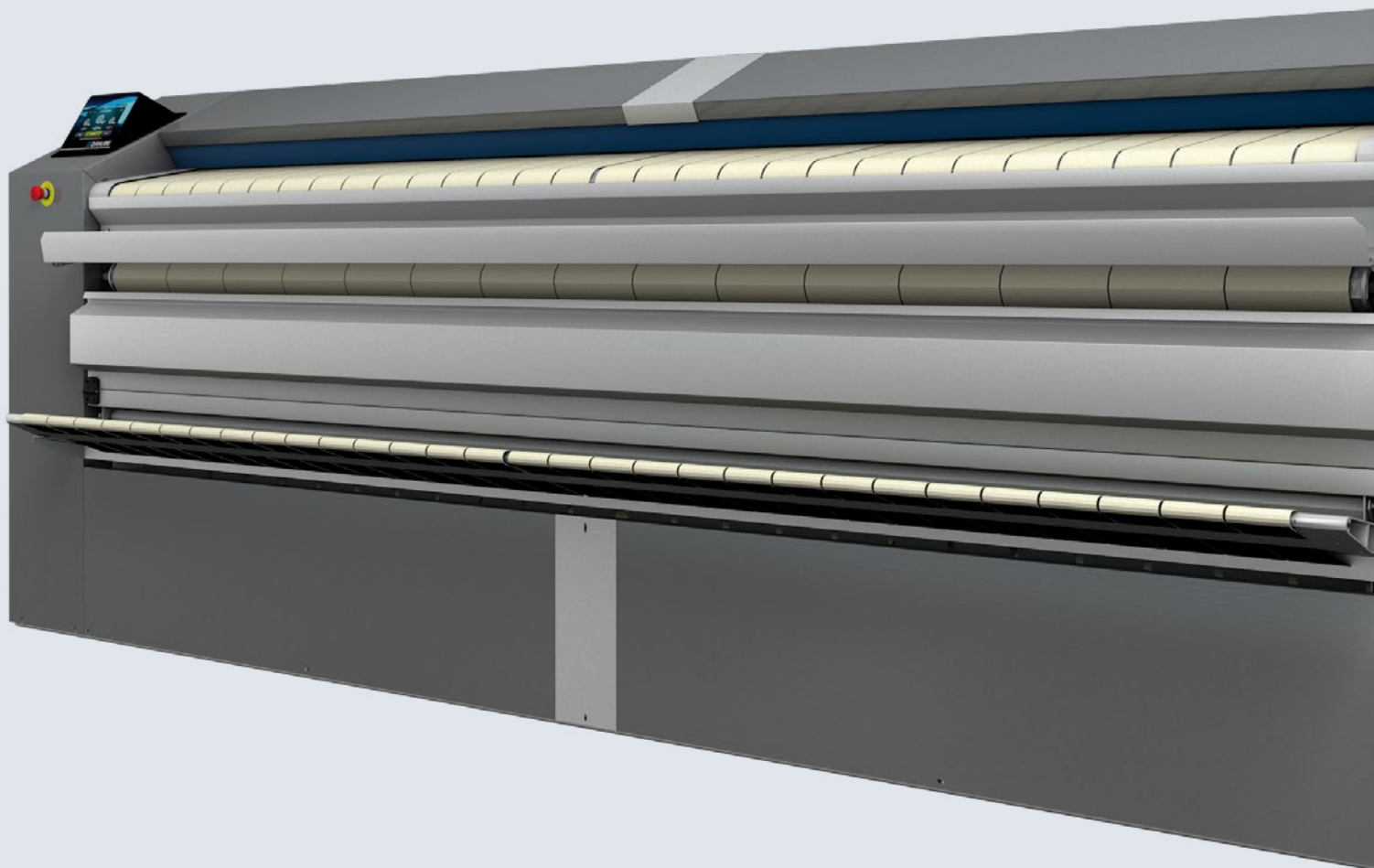
## ERGONOMICS

- Acoustic comfort: 65 dba max.
- Skinplate and stainless steel panels: easy to clean, better hygiene (RABC compliance).
- Minimal encumbrance: space saving.
- ET2 microprocessor: fully and easily programmable, easy to read with large display.
- Appropriate working height: 1.120 mm at feeding bands.



## CONNECTIVITY

- Danube Online communication standard: machine monitoring, error warning, telemetry and statistics. Remote desk and data recovery for technicians and maintenance, software update, etc.
- Laundry management: DANUBE IoT solution allows to monitor and manage your laundry.





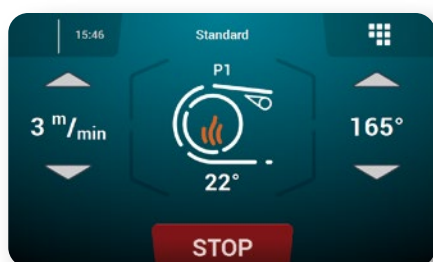


# EASY TOUCH 2

## Touch Screen 7"

Coloured touch screen:  
7" touchscreen.

Fully programmable: 5 preset programs, customization  
of programs according to each need.



## 37 languages

Available and easy to configure, thanks to  
DANUBE aim to be accessible to everyone.



## USB connection

PC software free of charge for programming,  
traceability, data analyses...

## IoT Danube Online

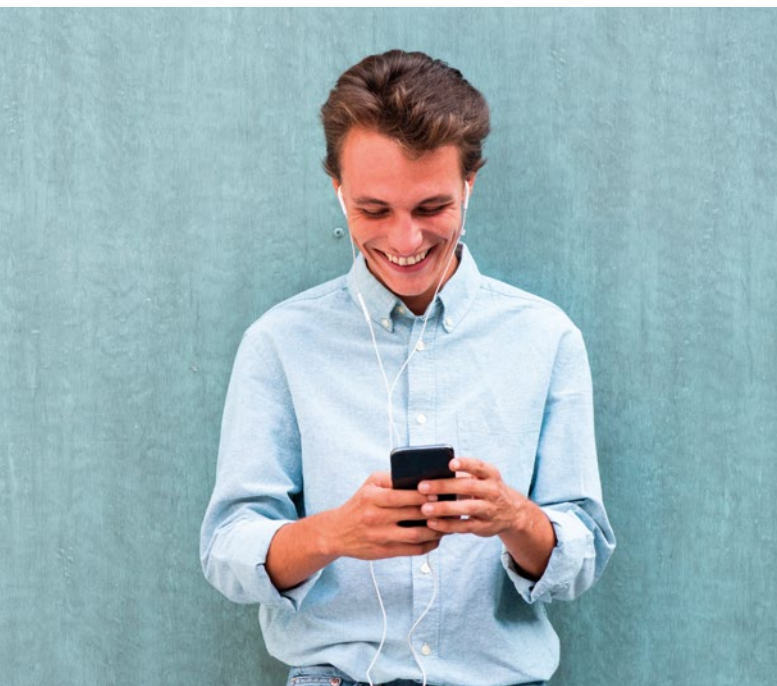
The ET2 control allows to receive information through  
the cloud for telemetry and statistics enabling a good  
analysis to ensure the best hygiene.





# CONNECTIVITY

A LOT OF ADVANTAGES :



## DANUBE ONLINE Standard

on all ranges equipped with ET2 control :  
free and easy connection to IoT



## Owners

- ✓ Improves usability, efficiency and comfort.
- ✓ Business control: configurable production reports, cycles, consumption, income, etc...
- ✓ Ensures the washing and drying processes, ensuring hygiene and disinfection, washing quality, etc...

**+ information + safety + control**

 **DANUBE**  
online



## Dealers

- ✓ Technological base for new businesses, renting, maintenance contracts, self-services, etc.
- ✓ Databases of installed machines, geographical distribution, models, etc...
- ✓ Greater added value of Danube machines for the customer.

**+ communication + usability + control**



## Technical service

- ✓ Improvement of customer service
- ✓ Improved processes, more efficient and lower costs, avoiding unnecessary trips.
- ✓ Remote troubleshooting, maintenance programs.
- ✓ Telemetry of programs, complete information of all the programs carried out.
- ✓ Access to technical documentation, videos, etc.

**+ information + support + efficiency**

# EFFICIENCY

The Gold ranges come with several energy and time saving features

## Care Iron

Automatic regulation of ironing speed according to residual moisture, energy economizer.

## Accurate temperature control

Thanks to the microprocessor (except steam models): lower energy consumption.

## Automatic shutdown at 80 °C

Increases the life time of ironing belts.

## Good heat conduction

Thanks to the material of the roll and its thickness: greater control of the energy expenditure.

## Radiant gas burner heated model

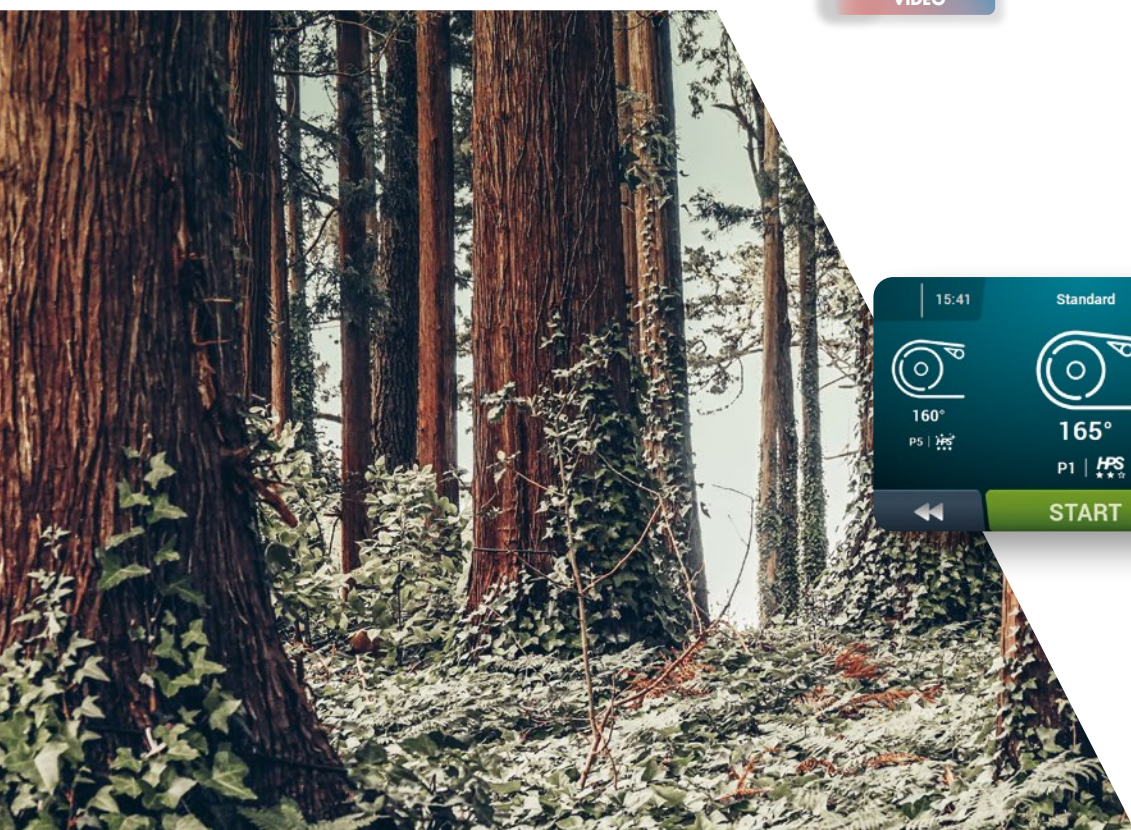
hourly output is increased by 25 %: time and energy savings.

WATCH  
VIDEO

## HPS system (High Production Speed)

Automatic adjustment of ironing speed, lowered for feeding and increased for higher production up to 1.5 m/min. (option on Ø 500 mm and standard on Ø 650 mm).

WATCH  
VIDEO







## ROBUSTNESS

Our flatwork ironers have been designed to last and preserve main components as much as possible



### Nomex quality ironing belts

High temperature resistant.

### Roll driving by inverter

Smooth operation preventing the wear of belts and mechanical elements.

### Skinplate and stainless steel panels

Long lasting and easy to clean.

### Nickel plate roll (opt.)

Anti-corrosive, more durable.



## ERGONOMICS

As health and safety at work had become an important issue, our equipment is designed to be the most comfortable for users

### Acoustic comfort

65 dba max.

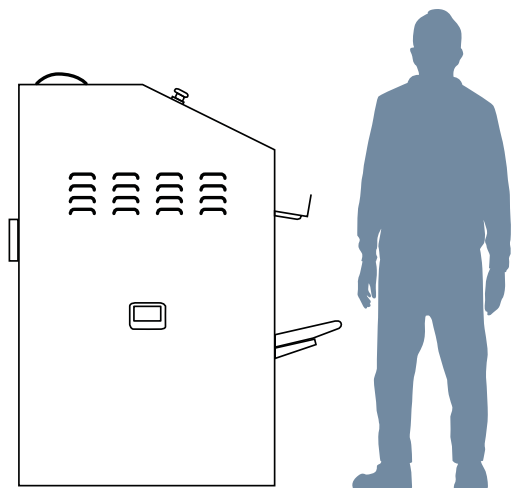
### Skinplate and stainless steel panels

Easy to clean, better hygiene: RABC compliance.

### Minimal encumbrance

Both ø 500 and 650 mm models with identical dimensions to fit most spaces.

Built-in lengthwise folder to keep the same dimensions as the ironer.



### Motor with inverter

Providing a gradual acceleration, soft use.

### User friendly control

ET2 with large touchscreen, fully programmable.

### Appropriate operating height

1120 mm at feeding bands.



# VERSATILITY

Our Gold flatwork ironers have been designed to be equipped with several options in order to meet all kind of requirements

## Radiant gas burner

Flexibility for a better production or adaptation to high level places with less oxygen.

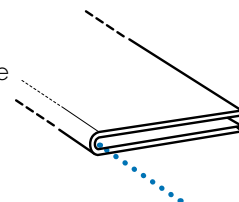
WATCH  
VIDEO

## Rear Exit (with folder)

As option with the built-in lengthwise folder, making easier handling operations.

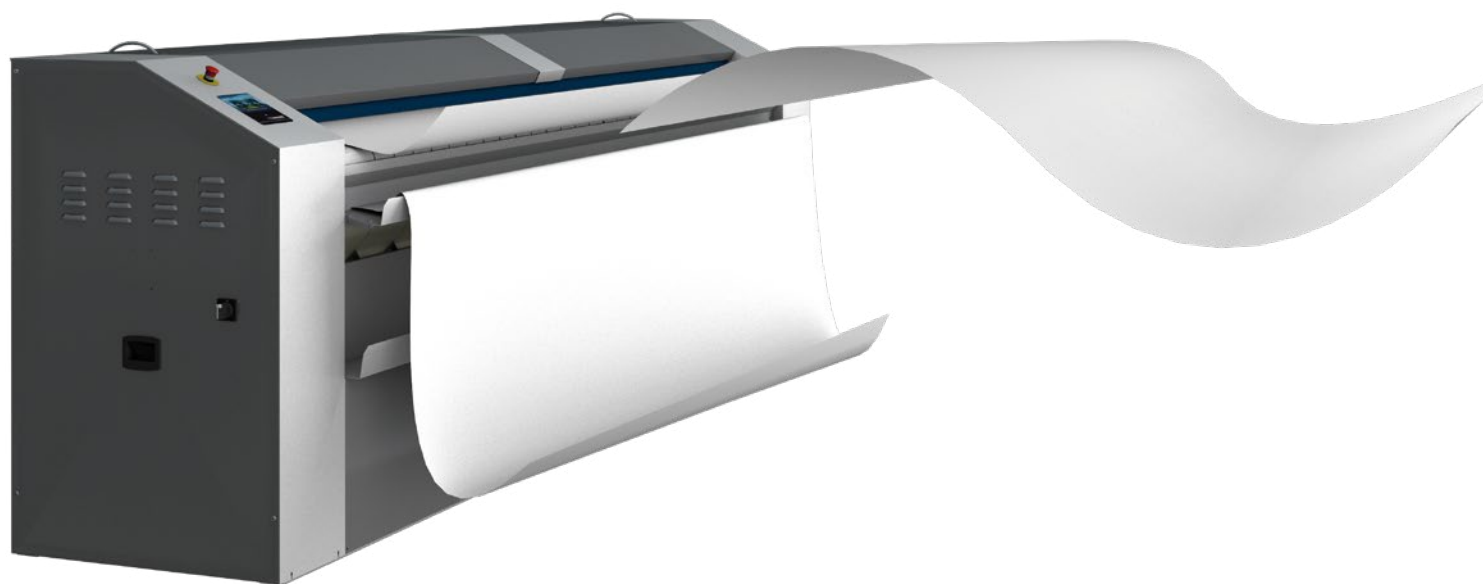
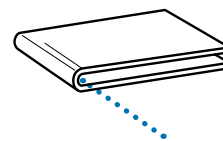
## Integrated lengthwise folder as option

Do not take more place than the single ironer, same encumbrance for ø 500 & 650 models.



## Cross folder

Possibility of adding an external cross folder and stacker to increase productivity (only with model equipped with folder + rear exit).





# EASY MAINTENANCE

One of DANUBE concerns is to make life easier for our clients. That includes offering quality equipment and parts of reputed brands, which demand little maintenance

## **One electrical connection and exhaust required**

## **Minimal encumbrance**

Fits most spaces.

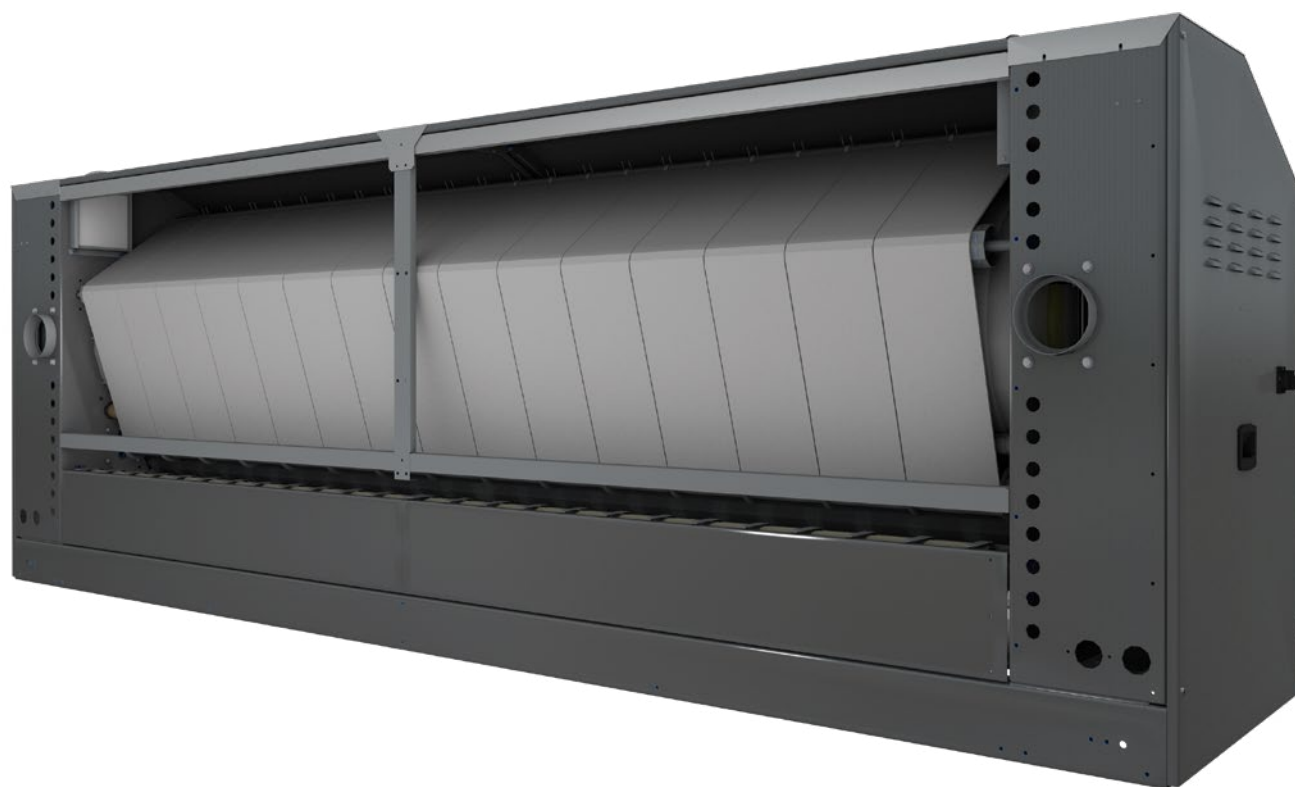
## **Easy access to all components**

On both sides of the machine.

## **Remote communication with ET2**

Quicker intervention.

## **Technical menu with ET2**



# FLATWORK IRONERS TECHNICAL DATA

	UNIT.	Ø 200			Ø 325					
		MICRA-14 BM	MICRA-16 BM	MICRA-20 BM	D-14 BM	D-16 BM	D-20 BM	D-20 GOLD	D-26 GOLD	D-33 GOLD
GENERAL DETAILS										
Theoretical production 45% humidity										
Electric heating	Kg/h	10 - 12	13 - 15	19 - 21	15 - 18	25 - 30	35 - 40	45 - 50	50 - 60	75 - 85
Atmo. gas heating	Kg/h	N/A	N/A	N/A	15 - 18	25 - 30	35 - 40	N/A	N/A	N/A
Radiant gas heating	Kg/h	N/A	N/A	N/A	N/A	N/A	N/A	60 - 65	70 - 75	90 - 100
Steam heating	Kg/h	N/A	N/A	N/A	N/A	N/A	N/A	N/A	N/A	N/A
Roll Ø	mm	200	200	200	325	325	325	325	325	325
Working width	mm	1.400	1.600	2.000	1.400	1.600	2.000	2.000	2.600	3.300
Height floorfeeding belts	mm	990	990	990	990	990	990	990	990	990
Working speed	mt/min	1.5 - 6	1.5 - 6	1.5 - 6	1.5 - 10	1.5 - 10	1.5 - 10	1.5 - 12	1.5 - 12	1.5 - 12
Control		BM	BM	BM	BM	BM	BM	BM	BM	BM
No. Programs	Nº	2 standard modes			2 standard modes			2 standard modes		
Length folder	Nº	No	No	No	No	No	No	No	No	No
Large surface contact with linen	°	270	270	270	270	270	270	270	270	270
POWER										
Electric										
Heating power	Kw	10,5	12	18	12	16,2	21	31,5	40,5	54
Total electric power	Kw	10,84	12,34	18,37	12,37	16,57	21,49	32,02	41,02	54,52
Gas										
Heating power	Kw	–	–	–	14	22,5	30	40	55	69
Total electric power	Kw	–	–	–	0,37	0,37	0,49	0,52	0,52	0,52
Steam										
Heating power	Kw	–	–	–	–	–	–	–	–	–
Total electric power	Kw	–	–	–	–	–	–	–	–	–
Steam consumption	Kg/h	–	–	–	–	–	–	–	–	–
Roll motor power	Kw	0,28	0,28	0,28	0,28	0,28	0,28	0,37	0,37	0,37
Fan motor power	Kw	0,09	0,09	0,09	0,12	0,12	0,12 x 2	0,12 x 2	0,12 x 2	0,12 x 2
CONNECTIONS										
Ø Gas inlet	BSP	–	–	–	1/2"	1/2"	1/2"	1/2"	1/2"	1/2"
Ø Steam inlet	BSP	–	–	–	–	–	–	–	–	–
Ø Condensed (Steam models)	BSP	–	–	–	–	–	–	–	–	–
DIMENSIONS										
Width	mm	1878	2128	2478	1952	2202	2552	2552	3202	3852
Depth	mm	444* (666)	444* (666)	444* (666)	686	686	686	686	686	686
Height	mm	1110	1110	1110	1112	1112	1112	1112	1112	1112
Weight	Kg	180	203	237	330	385	435	435	545	655
PACKING DIMENSIONS										
Width	mm	2130	2340	2780	2340	2340	2780	2780	3430	3980
Depth	mm	770	770	770	770	770	770	770	770	770
Height	mm	1400	1400	1400	1400	1400	1400	1400	1400	1400
Weight	Kg	220	240	275	365	405	458	458	585	700
Volume	m3	2,30	2,52	3,00	2,52	2,52	3,00	3,00	3,70	4,29
OTHERS										
No. Fume outlet	Nº	1	1	1	1	1	2	2	2	2
Ø Fume outlet	mm	83	83	83	98	98	98	98	98	98
Air flow	m3/h	300	300	300	500	500	1000	1000	1000	1000
Noise Level	dB	55	55	55	60	60	63	63	63	63
Evaporation power	l/h	8 - 10	10 - 12	14 - 18	7 - 14	14 - 21	21 - 28	21 - 30	23 - 34	34 - 45
Additional ELECTRIC POWER for folder option	kW	–	–	–	–	–	–	–	–	–
Additional ELECTRIC POWER for folder rear exit option	kW	–	–	–	–	–	–	–	–	–

\* Rear fan removed

DANUBE reserves the right to modify the technical data without notice



		Ø 500			Ø 650		
		M-20 ET2	M-26 ET2	M-33 ET2	G-20 ET2	G-26 ET2	G-33 ET2
UNIT.							
GENERAL DETAILS							
Theoretical production 45% humidity							
Electric heating	Kg/h	68	84	115	90	115	160
Atmo. gas heating	Kg/h	68	84	115	N/A	N/A	N/A
Radiant gas heating	Kg/h	82	100	138	104	132	184
Steam heating	Kg/h	68	84	115	-	-	-
Roll Ø	mm	500	500	500	650	650	650
Working width	mm	2.000	2.600	3.300	2.000	2.600	3.300
Height floor-feeding belts	mm	1.120	1.120	1.120	1.120	1.120	1.120
Working speed	mt/min	0,5 - 8	0,5 - 8	0,5 - 8	0,5 - 15	0,5 - 15	0,5 - 15
Control		ET2	ET2	ET2	ET2	ET2	ET2
No. Programs	Nº	5 preset programs			5 preset programs		
Length folder	Nº	Opt	Opt	Opt	Opt	Opt	Opt
Large surface contact with linen	°	310	310	310	310	310	310
POWER							
Electric							
Heating power	Kw	31,5	40,5	54	42	54	72
Total electric power	Kw	32,12	41,37	54,87	43,05	55,05	73,05
Gas							
Heating power	Kw	40	55	69	52	69	78
Total electric power	Kw	0,62	0,87	0,87	1,05	1,05	1,05
Steam							
Heating power	Kw	50	64	81	60	76	97
Total electric power	Kw	0,62	0,87	0,87	1,05	1,05	1,05
Steam consumption	Kg/h	50	67	85	60	80	102
Roll motor power	Kw	0,37	0,37	0,37	0,55	0,55	0,55
Fan motor power	Kw	0,25	0,25 x 2	0,25 x 2	0,25 x 2	0,25 x 2	0,25 x 2
CONNECTIONS							
Ø Gas inlet	BSP	1"	1"	1"	1/2"	1/2"	1/2"
Ø Steam inlet	BSP	3/4"	3/4"	3/4"	3/4"	3/4"	3/4"
Ø Condensed (Steam models)	BSP	1/2"	1/2"	1/2"	1/2"	1/2"	1/2"
DIMENSIONS							
Width	mm	2845	3445	4145	2845	3445	4145
Depth	mm	1070	1070	1070	1070	1070	1070
Height	mm	1420	1420	1420	1420	1420	1420
Weight	Kg	930	1180	1430	1189	1517	1765
PACKING DIMENSIONS							
Width	mm	3145	3745	4445	3145	3745	4445
Depth	mm	1153	1153	1153	1153	1153	1153
Height	mm	1672	1672	1672	1672	1672	1672
Weight	Kg	972	1470	1480	1231	1567	1815
Volume	m3	6,06	7,22	8,57	6,06	7,22	8,57
OTHERS							
No. Fume outlet	Nº	1	2	2	2	2	2
Ø Fume outlet	mm	153	153	153	153	153	153
Air flow	m3/h	600	1200	1200	1200	1200	1200
Noise Level	dB	65	65	65	65	65	65
Evaporation power	l/h	30 - 36	38 - 45	51 - 62	40 - 46	51 - 60	72 - 82
Additional ELECTRIC POWER for folder option	kW	0,56	0,56	0,56	0,56	0,56	0,56
Additional ELECTRIC POWER for folder rear exit option	kW	0,74	0,74	0,74	0,74	0,74	0,74

DANUBE reserves the right to modify the technical data without notice

# FLATWORK DRYER IRONERS

[www.danube-international.com](http://www.danube-international.com)



DANUBE International  
Parc d'Activités de Sologne - CS 10026  
41600 Lamotte-Beuvron - FRANCE  
Tél.: +33 (0)2 54 88 05 76  
Fax: +33 (0)2 54 96 89 04  
Hotline: +33 (0)2 54 88 83 22  
[support@danube.fr](mailto:support@danube.fr)  
SAV: +33 (0)2 54 88 83 65  
Logistique commandes:  
+33 (0)2 54 88 05 76  
[info@danube-international.com](mailto:info@danube-international.com)

MORE INFO:



ONNERA GROUP